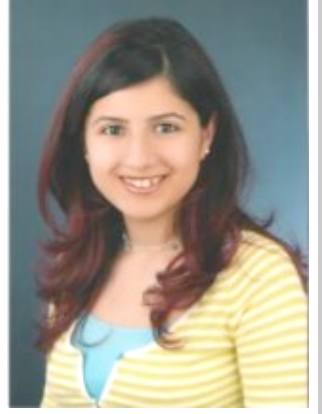


# Şenay SADIÇ



## EDUCATIONAL

❖ Phd. : ITU Industrial Engineering. Program  
(2008- )

❖ Msc. : ITU Industrial Engineering Program  
(2008- 3.28/4.00)

**Thesis Title:** Data mining Including Application of Cognitive Maps  
and Decision Tree Algorithm

❖ Bachelor : □TÜ – Management Engineering Program  
2005- 3.22/4.00

**Thesis Title:** Theory of Constraints and An Application

❖ High School : Antalya Anatolian High School  
2001- 4.85/5.00

## PERSONAL

❖ Birth Date : 20.07.1983  
❖ Birth Place : Antalya  
❖ Nationality : TR

## ACADEMIC

❖ Istanbul Technical University Industrial Engineering Program  
Research Assistant - Industrial Engineering Program – Technology  
Management  
(December 2005- ...)

## **LIST of PUBLICATIONS**

### **National publications:**

Sadıç, Ş., Özdemir, D. ve Gözlü, S., 2007. “Improvement of delivery process in petroleum and petroleum products transportation utilizing theory of constraints”, İstanbul Ticaret Üniversitesi Fen Bilimleri Dergisi, Yıl:5 Sayı:10, Güz 2006/2.

SADIÇ, Ş., Ozdemir, D. ve GOZLU, S., 2006. “Improvement of delivery process in petroleum and petroleum products transportation utilizing theory of constraints”. Operations Research and Industrial Engineering Conference, Kocaeli, Türkiye, July 3-5.

ÖZOK., A.F., SADIÇ, Ş., AK, R., KILINÇ, M.S., 2006. “Ergonomical Analysis of the work conditions in SMI’s”, 12. National Ergonomics Congress, November 16-18, Ankara, Türkiye.

### **International Publications:**

Sadıç, Ş. ve Kayakutlu, G., 2007. “Integrating Decision Trees and Cognitive Maps for Market Segmentation in Service Sector”, PICMET- Managing Innovation and Technology”, August 5-9, Portland, Oregon, USA.

Koç, T.V ve Sadıç, Ş.,2007. “Criteria Selection by ANP in Customer Segmentation”, EURO XXII- European Conference on Operational Research, July 8-11, Prague, Czech Republic.

Sadıç, Ş. Ve Kayakutlu G., 2008. “Loyalty prediction through Decision Tree Analysis” Operations Research 2008, September 3-5, Augsburg, Germany